



STEP 1 – PRIOR TO INSTALLATION

- A) Bushwacker®** only approves installing the flares according to these written instructions with the hardware provided. **WARNING:** Failure to install according to these instructions will invalidate the warranty. This includes, but is not limited to using alternative installation methods, hardware, or materials. **DO NOT USE:** Loctite, SuperGlue, or similar products on the hardware or the flares.
- B) Fit:** Verify the fit of the flares to vehicle. (Some filing, sanding, or cutting may be necessary to ensure proper fit).
- C) Painting:** (Optional) if paint is desired it must be done prior to installing flares on vehicle. Clean outer surface with a good grade degreaser. **DO NOT USE LACQUER THINNER OR ENAMEL REDUCER AS A DEGREASER.** Wipe outer surface thoroughly with a tack rag prior to paint. Application of plastic adhesion promoter for ABS plastic as per your paint system manufacturer's recommendations is required. Paint flares using a high quality enamel, or polyurethane automotive paint. If painting edge trim (not recommended), use a flex additive.
- D) Performance:** Using larger Tires may increase the area required to turn the vehicle. Some Tire/Rim combinations may require lowering bump stops and or installing steering stops to prevent tire from contacting flare.
- E) Exhaust System:** Modifications may be necessary to maintain a minimum 4" clearance between flares and exhaust pipes. (Exhaust gases should not vent directly onto flares)
- F) Metal Protection:** All exposed fasteners and bare metal should be treated with rust resistant paint **BEFORE** installing flares. Spray inner fender wells with undercoating **AFTER** flare attachments have been completed.
- G) Decals:** Flares may interfere with existing decals on vehicle. If you wish, remove decals prior to installation of flares.
- H) Care & Cleaning:** Bushwacker fender flares are built to last; any detergent you use to wash your vehicle is sufficient to clean the flare. Do not use any harsh abrasive detergents.

Chevrolet DRT Style® Fender Flares Set of 4 Set Part #40944-02 Rev-0 04/29/2019

For complete fitment info visit : www.bushwacker.com

TOOLS FOR EASY INSTALLATION:

- Socket Wrench
- T-15 Torx Bit
- Electric Drill
- 3/32" Drill Bit
- #2 Phillips Screwdriver
- Grease Pencil
- Measuring Tape / Ruler
- Pry Tool
- Awl (Optional)
- Right Angle Ratchet (Optional)

PLEASE READ: Dirt and debris can become lodged between the fender flares and the vehicle's fenders, causing scratching and paint wear from vibration. Lund International is not responsible for any damage, and the installation of our fender flares is done with the buyer's understanding that this scratching and paint wear may occur.

LIMITED LIFETIME WARRANTY AGAINST ANY MANUFACTURING DEFECTS





- To claim a warranty, you must provide Proof of Purchase.



The material that your product is made from can be recycled. Please also consider recycling the packaging that your product came in.



Included in Hardware Kit:

- | | | | | | | | |
|----|---|----|---|----|---|----|---|
| 1. |  | 2. |  | 3. |  | 4. |  |
| | SW1-0066,
#8 x 5/8" Phillips
PH Drill Screw,
20 pcs | | SW1-0056,
#8 x 3/4"
PH Screw,
8 pcs | | GP1-0007,
Med. Wiper Style
Edge Trim,
364 inches | | ET1-0002,
Edge Trim Tool,
1 pc |

If your flares already have the edge trim installed, skip to Front Flare Installation Step 1.

STEP 2 - EDGE TRIM INSTALLATION

A. Peel two to three inches of red vinyl backing away from Edge Trim (GP1-0007) tape. Applying the adhesive side of the edge trim to the inner side of the flare, affix the edge trim to the top edge of the flare (the portion that comes in contact with the vehicle).

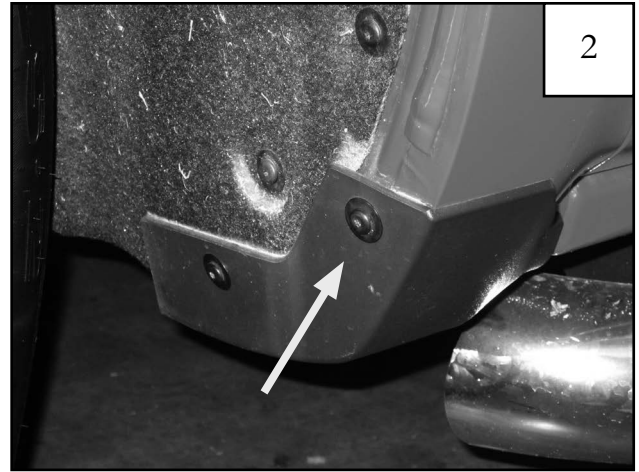
B. Press edge trim into place along the top edge of the flare in one-foot increments, pulling red vinyl backing free as you continue to work your way around the top edge of the flare.



Front Flare Installation Procedures (Driver's Side):



Turn front tire outward for easier installation.



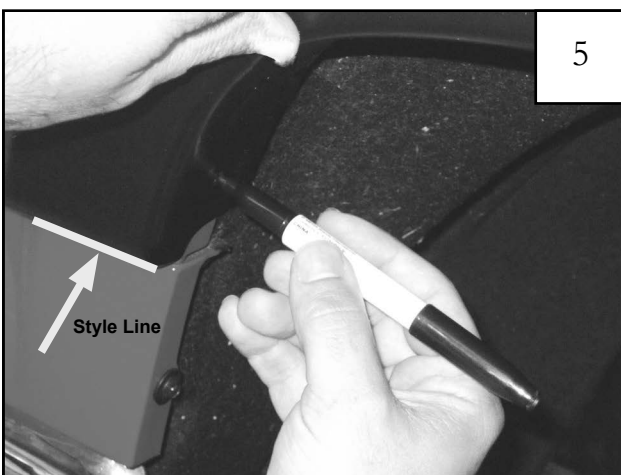
Using a T-15 Torx bit, remove two factory screws in mudguard at rear of front wheel well and remove mudguard.



To mount the flare into position, hold the flare 2-3" inches below the top lip of the wheel well. Push in and slide up to allow flare to fully seat against the wheel well opening.



Start supplied Screw (SW1-0056 through two bottom rear holes in flare and into factory hole in rear of wheel well. *Do not tighten.*



Hold front of the flare firmly on the fender. Make sure front of flare is aligned with bumper style line. Using a grease pencil, mark five hole locations using the holes in the flare as a guide. See next step.



Hole locations to be marked.



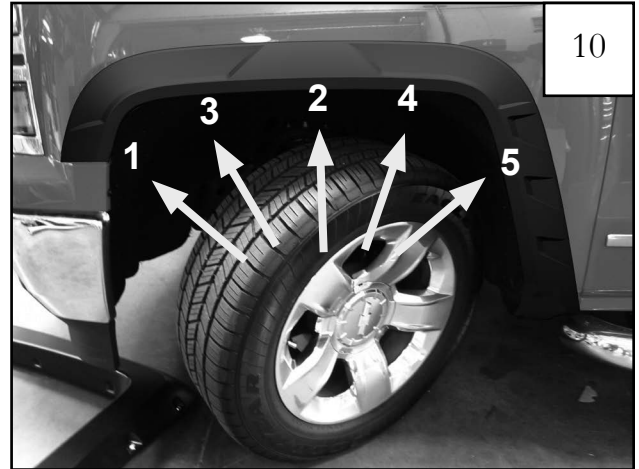
Remove the flare. At the marked location made in Step 5, measure inward 10mm from the edge of the fender. These are the marks to be drilled.
Note: Marks at 10mm may be on either side of the first mark.



Using a 3/32" drill bit, drill pilot holes at the marks made in Step 7.



Locate flare into position on vehicle. Install supplied screw (SW1-0056) through two bottom rear holes in flare and into factory hole in rear of wheel well.

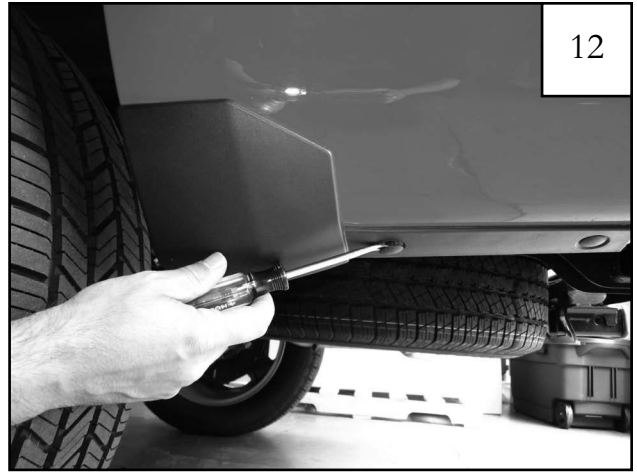


Install self-tapping screws (SW1-0066) into pilot holes in the order indicated. **TIGHTEN ALL SCREWS.**

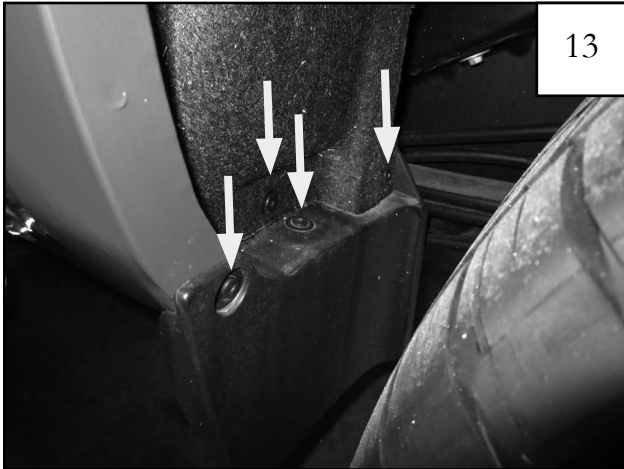
Rear Flare Installation Procedures (Driver's Side):



Using a T-15 Torx bit socket wrench, remove factory installed screws using. Discard screws.



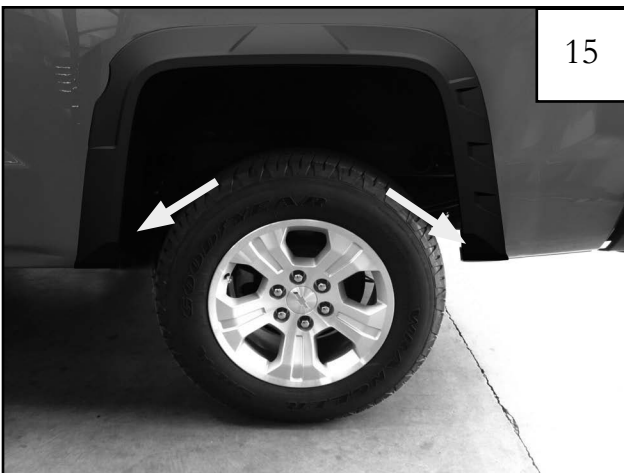
Using a pry tool, remove factory retainers in bottom of factory mudguard. Remove mudguard and discard.



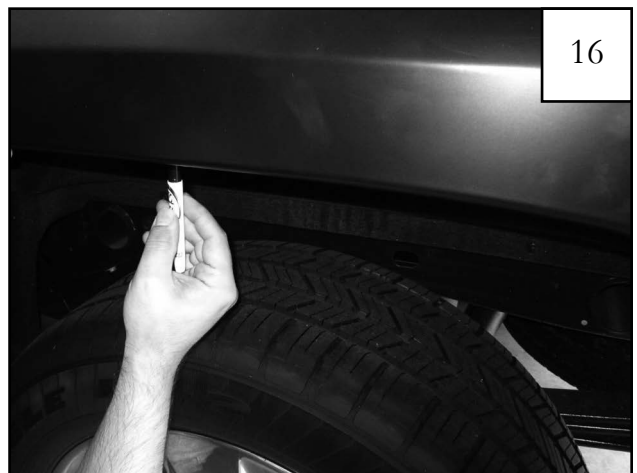
Using a T-15 Torx bit socket wrench, remove the four factory screws from the plastic wheel well piece.



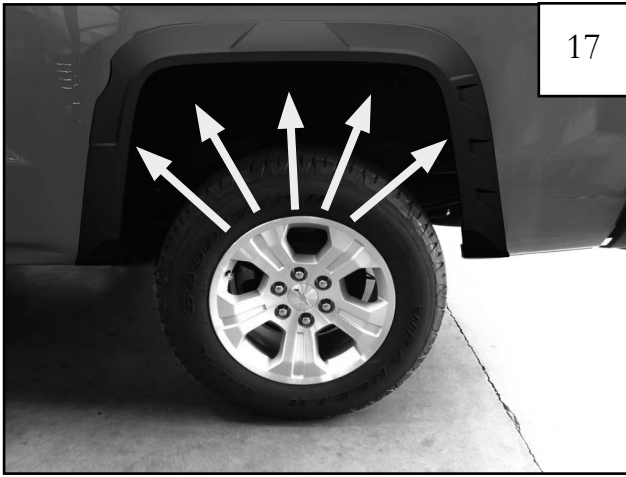
Re-install two factory screws into wheel well liner.



Hold flare firmly in place on fender. Start supplied screw (SW1-0056) at bottom most screw locations (shown). *Do not tighten.*



Using a grease pencil, mark five locations using the holes in the flare as a guide.



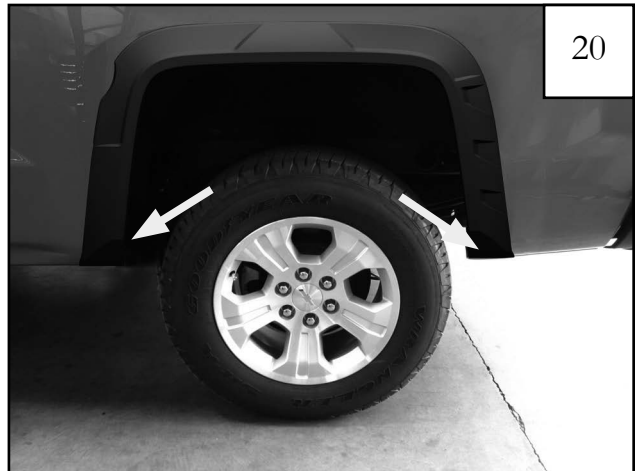
Five hole locations to be marked.



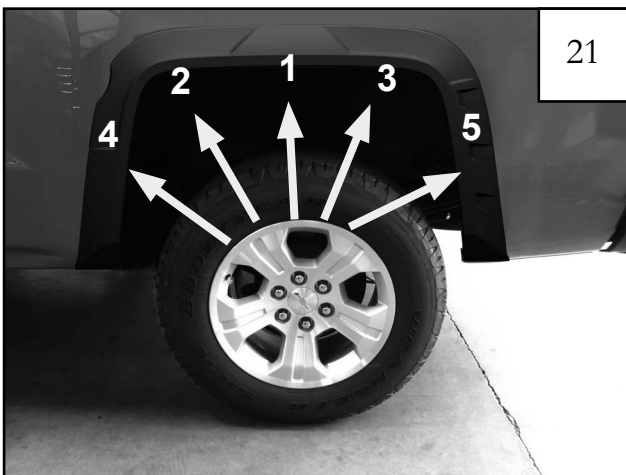
Remove the flare. At the marked locations made in Step 16, measure inward 22mm from the edge of the fender. These are the marks to be drilled.
Note: Marks at 22mm may be on either side of the first mark.



Using a 3/32" drill bit, drill pilot holes at the marks made in Step 18.

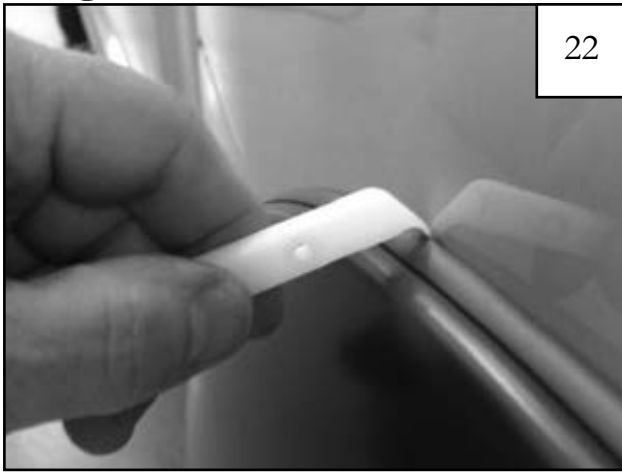


Install supplied screws (SW1-0056) into two lower most holes.



Install supplied self-tapping screws (SW1-0066) into pilot holes in the order indicated. **TIGHTEN ALL SCREWS**

Edge Trim Tool Procedures:



Using supplied Edge Trim Tool (ET1-0002), seat edge trim against vehicle by hooking curved end under edge trim at one end of flare. Next, slide around outer edge of flare to the other end.



Using flat end of supplied Edge Trim Tool (ET1-0002), seat edge trim against flare by inserting straight end between edge trim and flare at one end. Next, slide around entire edge to the other end.